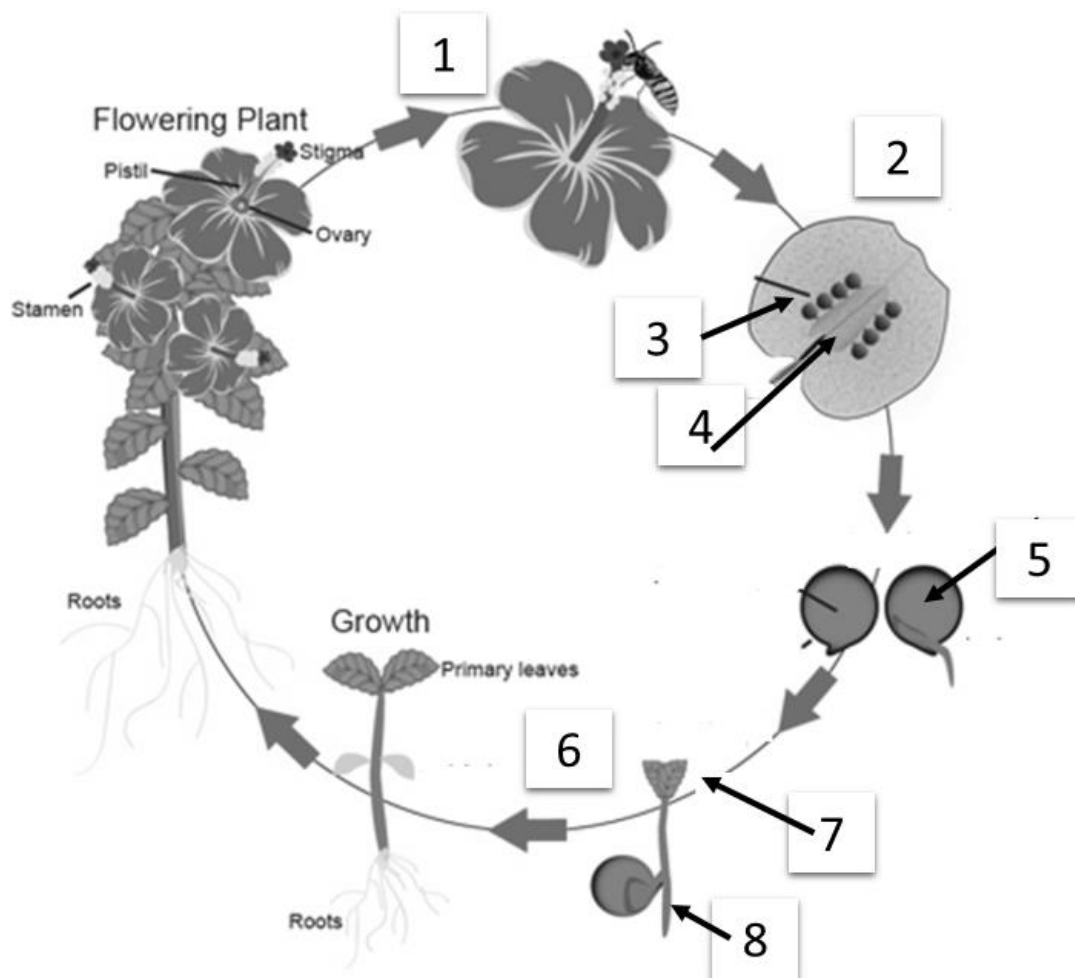




I.



Q1. Label points 1 to 8 in the diagram above.

Q2. What is function of seed coat?

Q3. Pick dicot and monocots: Write D for dicot and M for monocot.

Bean	Maize	Mango plant		Rice	Mustard	Wheat	Pea
		Groundnut					
		Fenugreek					

Q4. Give an example of plant seed that germinate in cold condition, warm condition and in any condition.

Q5. Why seeds completely covered in water don't germinate?



Q6. Quote two examples of seeds that don't

germinate.

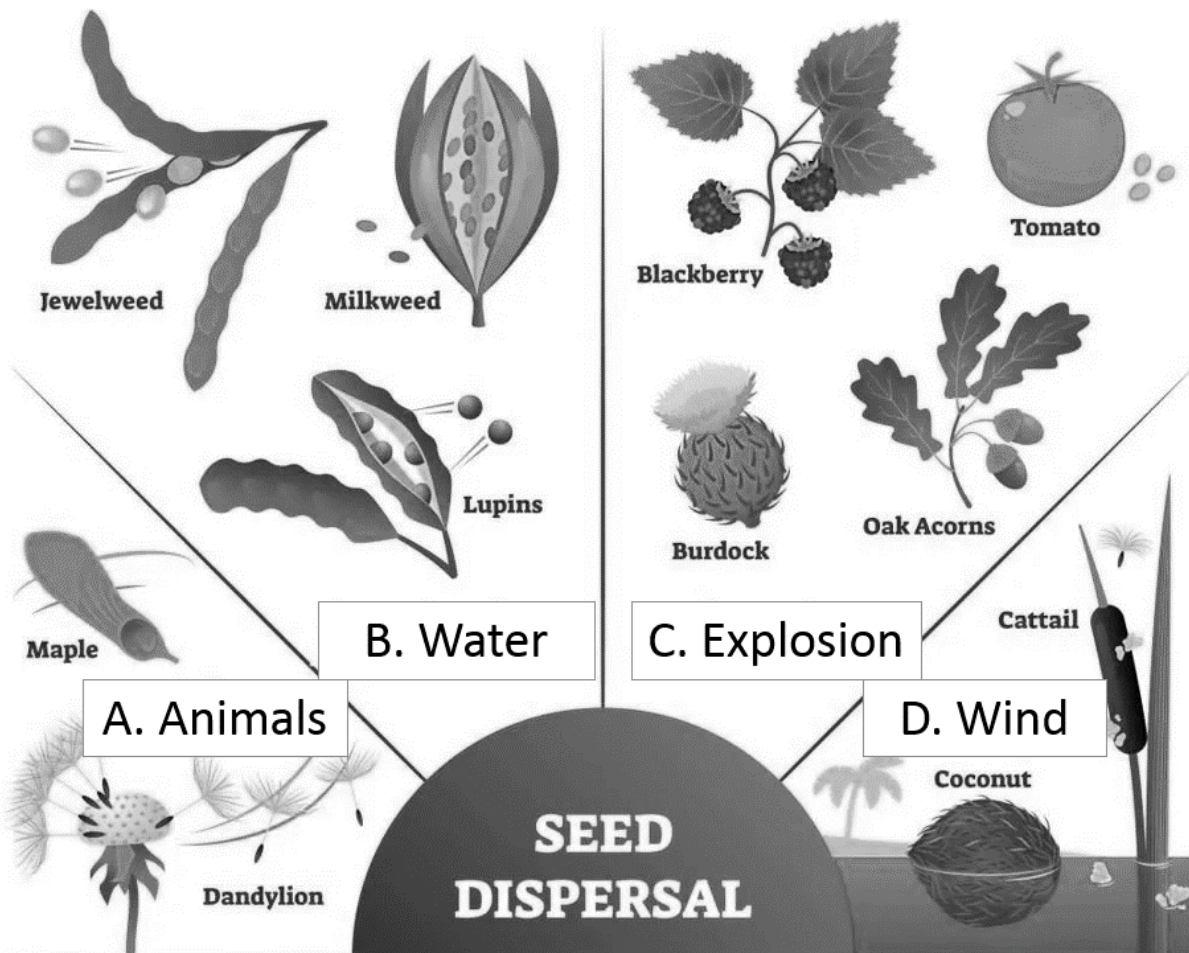
Q7. Explain the process from seed to seedling?

Q8. How does cotyledons help seedling till leaves make their own food?

Q9. Write five factors that help seedling to turn into health plants.

Q10. Explain the importance of seed dispersal?

Q11. Rewrite the correct sequence of seed dispersal in the diagram below:



Q12. Categorise new plants from roots, stems, leaves, non-flowering plants and underground stems from the list below:

Begonia	Sweet Potato	Lily	Bryophyllum
Rose	Tea	Marigold	Grape
Ginger	Pine cone	Yam	Fern
Turmeric			Potato



New plants from roots:

New plants from stems:

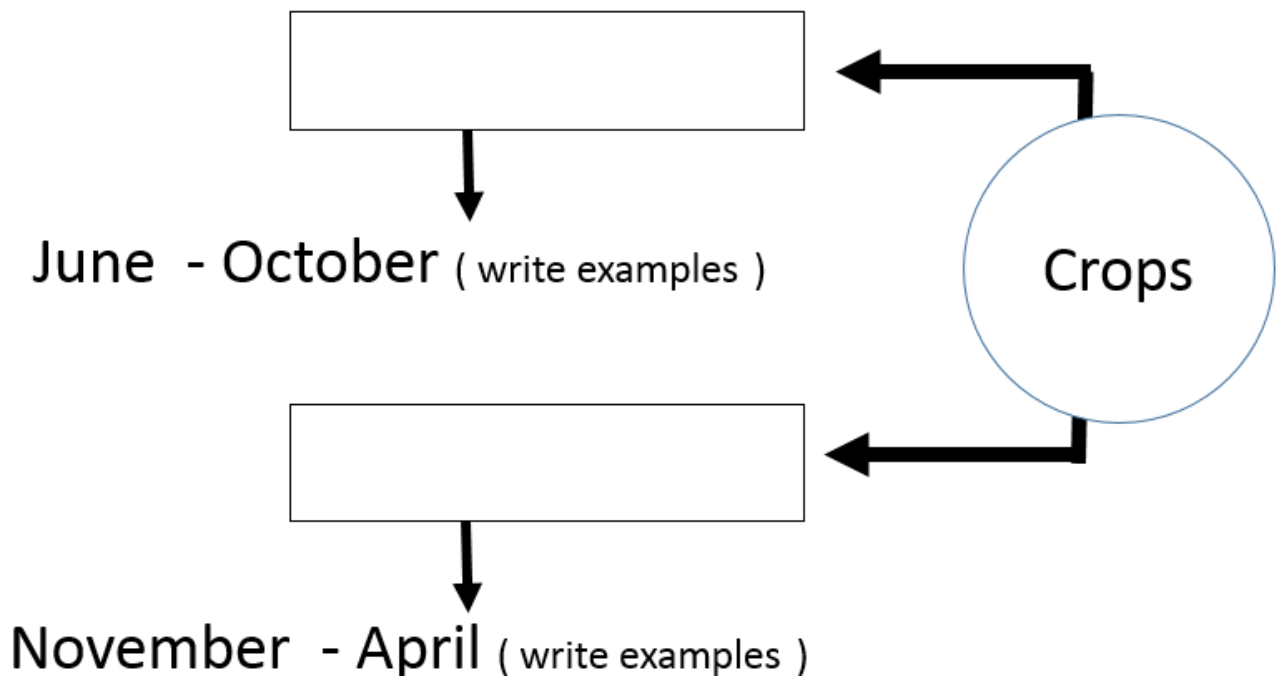
New plants from non-flowering plants:

New plants from underground stems:

Q13 (A): Write the factors essential for crop grown in a particular place depends.

Q13(B): Explain with appropriate examples

Q14. Complete the diagram below:



Q15. Discuss in brief the hard work farmers put to grow food crops?

Q16. Who is *Father of Green Revolution in India*?